

Epsilon[®] PRO

MULTI-SURFACE • SEMI-RIGID • COATING

Strengthen • Smooth • Gloss • Add Impact Resistance

Epsilon[®] PRO is a thixotropic epoxy coating that self-thickens for brushing onto a variety of surfaces. Epsilon[®] PRO is semi-rigid, pot life is 22 minutes, with a re-coat time of 3 hours. All layers should be allowed to cure for 16 hours at 73° F / 23° C and can be accelerated with mild heat.



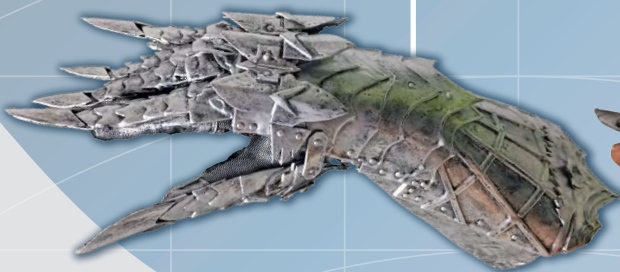
HALO Cosplay Armor

by Jeremie Sloan of Armory Props
E.V.A. Craft Foam Coated
with Epsilon[®] PRO



E.V.A. Craft Foam
Coated With Epsilon[®] PRO
Combined With Cast Magic[®] Powder

Epsilon[®] PRO is clear and can be easily colored using SO-Strong[®], Ignite[®] or UVO[®] colorants. Cured coating has a gloss finish and can be sanded, primed and painted.



Raw Foam



Coated Foam

Dries to a glossy clear impact resistant semi-rigid finish
Works on many materials • Long working time • Add colors & metal powders



5600 Lower Macungie Rd, Macungie, PA 18062 USA / Toll-Free: 800.762.0744 / www.smooth-on.com